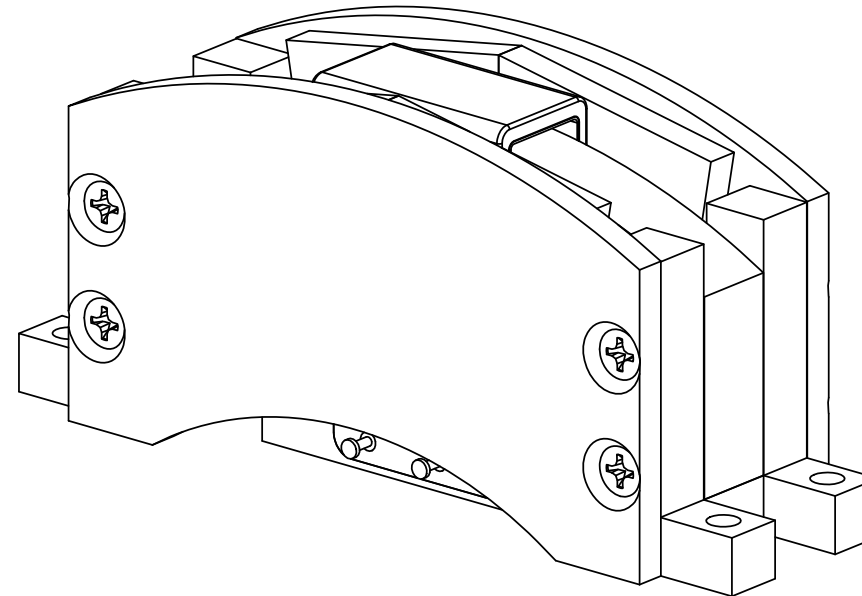
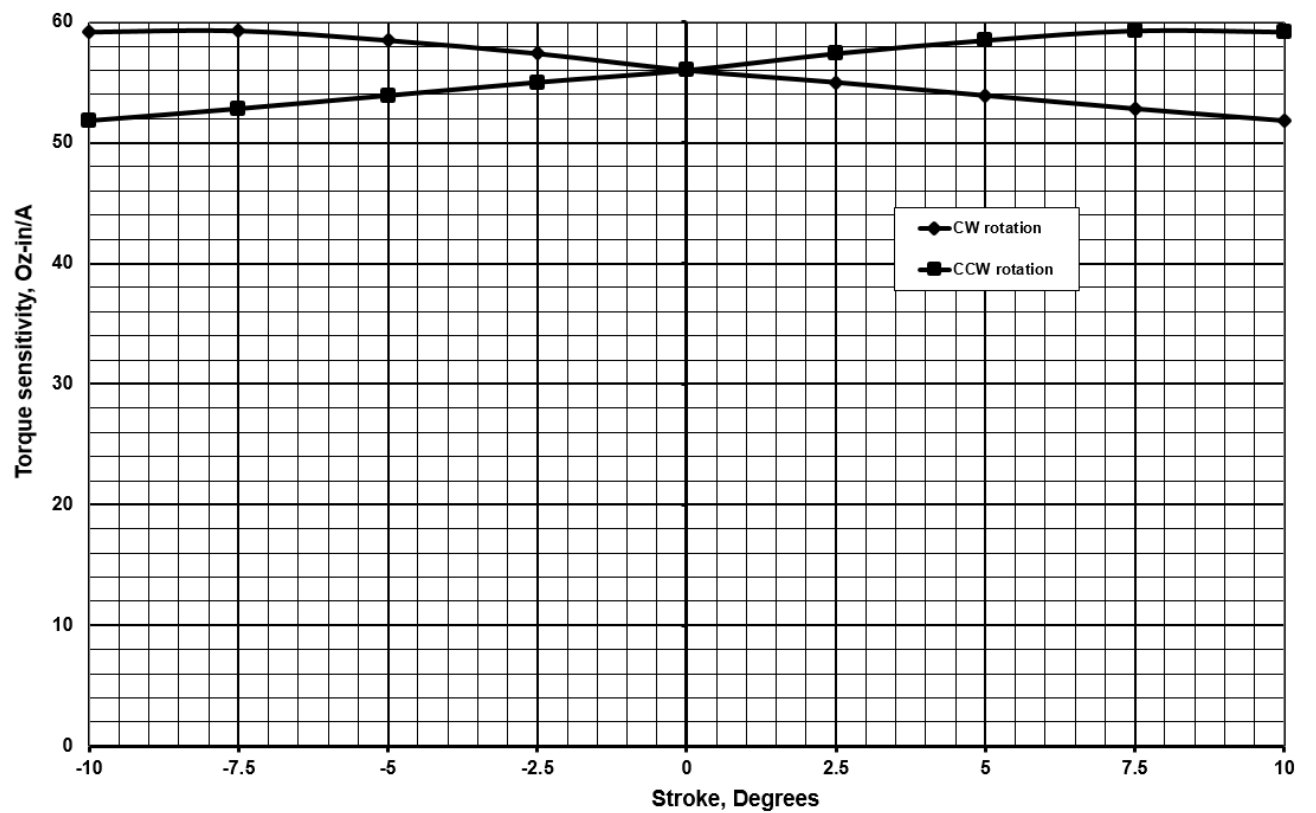


Winding Constants *	Units	Tol	Symbol	Wdg	A	Wdg	B
DC Resistance	Ohms	+ 12.5%	R	5		.15	
Voltage @ T _P	Volts	Nominal	V _P	15.2		2.6	
Current @ T _P	Amps	Nominal	I _P	3.04		17.4	
Toeque Sensitivity	Oz-in/Amp	± 10%	K _T	56		9.77	
	Nm/Amp	± 10%		.395		.069	
Back EMF Constant	V/Rad/Sec	± 10%	K _B	.395		.069	
Inductance ****	milli-Henry	± 15%	L	4.2		.13	

Rotary Actuator Parameters *	Units	Symbol	Value
Peak Torque **	Oz-in	T _P	170
	Nm		1.2
Continuos Stall Torque ***	Oz-in	F _{CS}	103
	Nm		.73
Actuator Constant	Oz-in/√Watt	K _A	25
	Nm/√Watt		.177
Electrical Time Constant	milli-sec	T _E	.84
Mechanical Time Constant	milli-sec	T _M	4.52
Theoretical Angular Acceleration	rad/sec ²	α _T	8510
Max Theoretical Frequency @ Full Stroke and Sinusoidal / Triangular Motion	Hz	f _{max}	35.1/39
Power I ² R @ F _p	Watts	P _P	46.2
Angular Stroke	+/- Degrees		10
Moving Coil Inertia	Oz-in-sec ²	J _{CA}	.02
	Kgm ²		1.41x10 ⁴
Thermal Resistance of Coil	°C/Watt	Θ _{TH}	5.1
Maximum Allowable Coil Winding Temp	°C	Temp	155
Total Weight	Oz	Wt	18
	G		510

* AT MID-STROKE POSITION AND @ 25°C AMBIENT TEMPERATURE.
 ** 10 SECONDS @ 25°C AMBIENT & 155°C COIL TEMPERATURE.
 *** @25°C AMBIENT & 155°C COIL TEMPERATURE.
 **** MEASURED AT 1000 Hz.

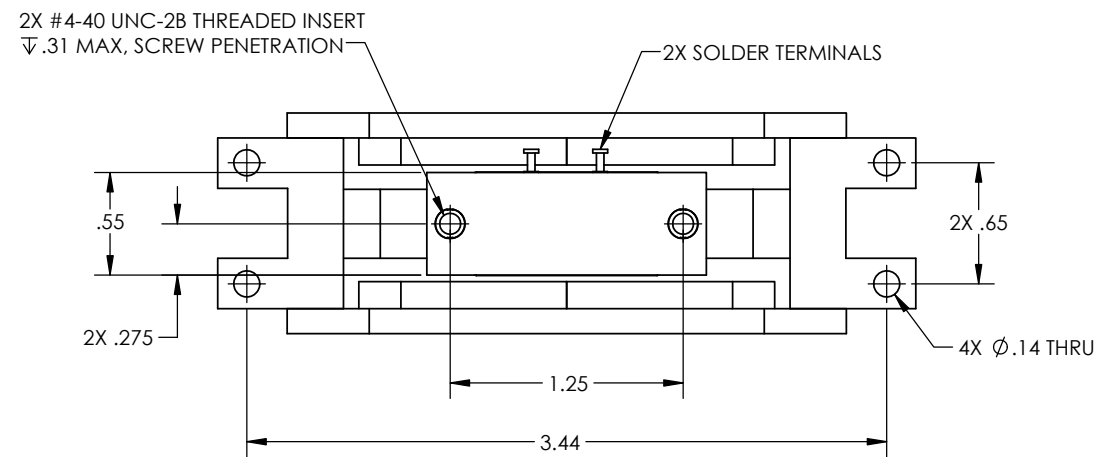
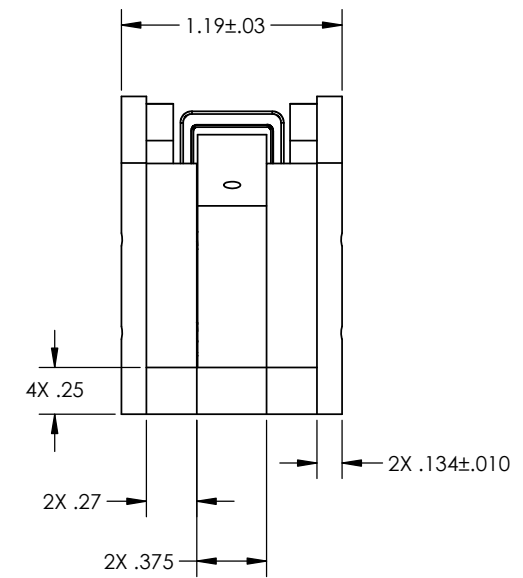
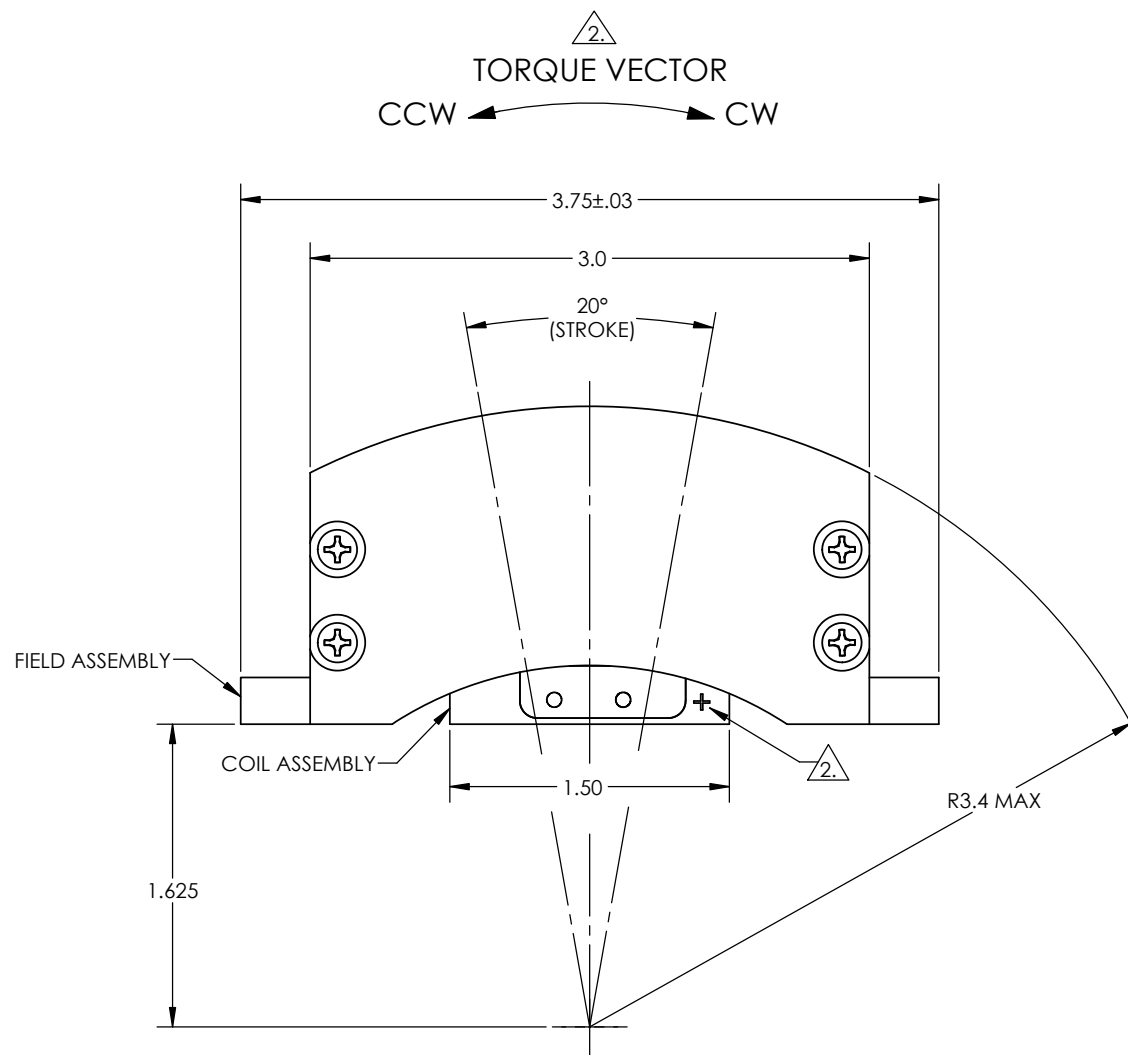
ZONE	REV.	REVISION DESCRIPTION	ECN NO.	DATE
	T			



SOLIDWORKS

FOR REFERENCE ONLY, CHECK LATEST REVISION BEFORE USE.		529 PLEASANT STREET P.O. BOX 2964 ATTLEBORO, MA 02703	
DRAWN DATE ENGINEER DATE APPROVED	SENSATA TECHNOLOGIES PROPRIETARY AND CONFIDENTIAL. NEITHER THIS PRINT NOR THE INFORMATION CONTAINED HEREON IS TO BE USED AGAINST THE INTERESTS OF SENSATA TECHNOLOGIES OR AGAINST THE INTERESTS OF ANY OF ITS AFFILIATED COMPANIES OR WHOLLY OWNED SUBSIDIARIES. INTERPRET DIMENSIONING AND TOLERANCING PER ASME Y14.5-2009. UNLESS OTHERWISE SPECIFIED DIMENSIONS ARE IN INCHES. TOLERANCES DECIMALS ANGLES X.X ± 0.03 X.X° ± 0°30' X.XX ± 0.01 X.XXX ± 0.005	TITLE LINEAR ACTUATOR	
DATE APPROVED	DO NOT SCALE DRAWING	THIRD ANGLE PROJECTION	SIZE DWG NO. REV. C RA68-12-001-LTR T
DATE			SCALE 2:1 SHEET 1 OF 2





NOTES: UNLESS OTHERWISE SPECIFIED

1. INCH DRAWING, DIMENSIONS IN BRACKETS [] ARE IN MILLIMETERS AND ARE FOR REFERENCE ONLY.

2. A POSITIVE (+) VOLATAGE APPLIED TO "+" TERMINAL WILL PRODUCE A TORQUE ON THE COIL ASSEMBLY IN THE CW DIRECTION WHEN VIEWED FROM THE TERMINAL SIDE.



		529 PLEASANT STREET P.O. BOX 2964 ATTLEBORO, MA 02703
SIZE	DWG NO.	REV.
C	RA68-12-001-LTR	T
SCALE	SOLIDWORKS	SHEET 2 OF 2